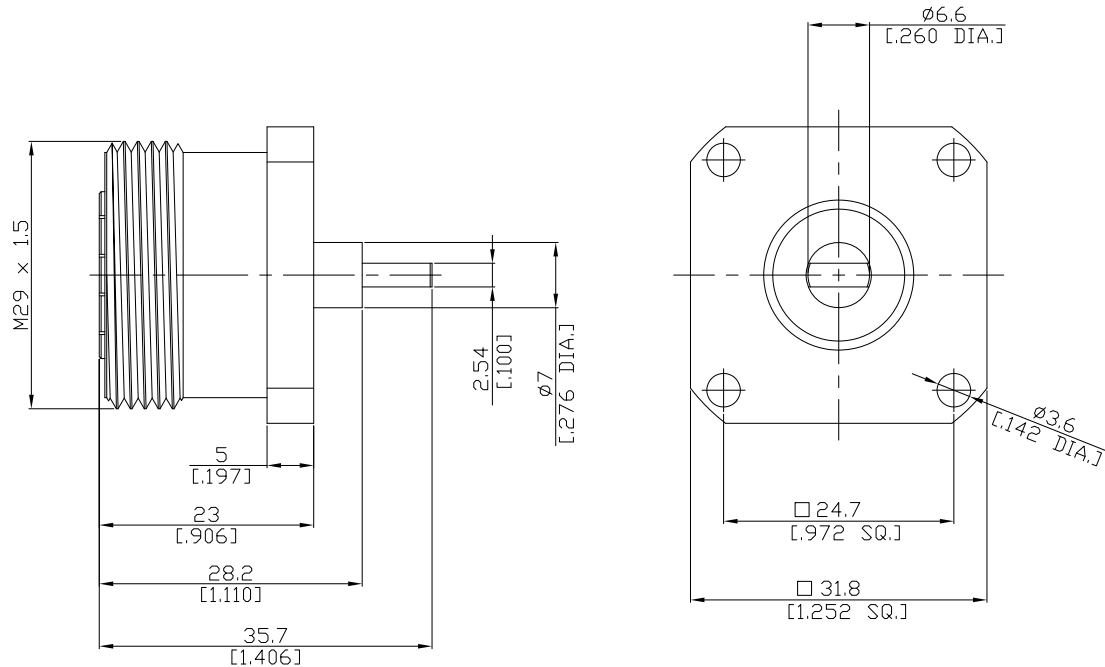


## 7/16 Straight Panel Receptacle Jack Flat End

## 716-2GFD50-3570A/G4



All dimensions are in mm [inch]

Tolerances according to DIN ISO 2768-mH

### Interface

According to IEC 61169-4

### Electrical Data

Impedance 50  $\Omega$   
Frequency DC to 7.5 GHz

### Mechanical Data

Coupling mechanisms Screw-lock  
Weight 0.0825 kg

### Environmental Data

Temperature range -65°C to +165°C  
RoHS compliant

### Material And Plating

Piece Parts	Material	Plating
Centre contact	Phosphor Bronze	Silver
Body	Brass	Copper-Tin-Zinc Alloy
Insulator	PTFE	

### Packing

Single or 100